



Early Learning
Coalition of the
Big Bend Region

ARRPA

Funding Webinar



FY 2023-24

ARPA Grants Available



- Curriculum
- Workforce Initiatives
- Training and Professional Learning Activities
- Equipment, Supplies, & Classroom Materials
- Increasing/Building the Supply of Child Care



Grant Qualifications

In order to be eligible, you must:

- Be a licensed early child care provider with an **active School Readiness or VPK Contract from ELC Big Bend**
- Have not had a **terminated contract and/or eligibility revoked within the past five years**
- Not be **under investigation or has been convicted of child care fraud**
- Not be included on the **Florida Child Care Food Program (CCFP) USDA Disqualified list**

*Early learning/child care providers that contract with multiple coalitions will be paid by the coalition where the program is **physically located** (your "home" coalition).*



How to Access WebAuthor



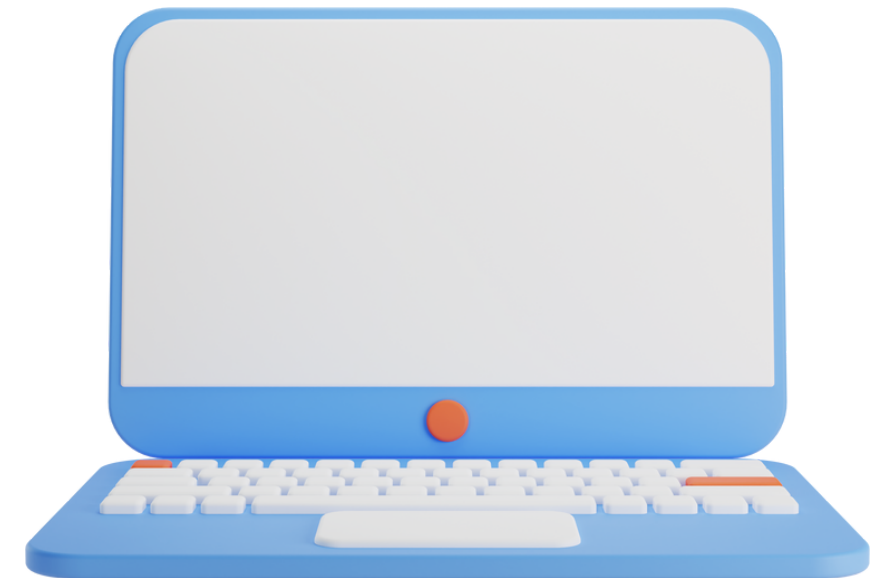
Direct Link

Please visit
elcbigbend.webauthor.com
to register or access your
account



Scan Me

You can access your
WebAuthor Account on
your mobile phone.



ELC Website

You can find “Available
Funding” under the
**Providers Tab > Resources
> Available Funding**





Provider Portal

Resources

Forms and Links

Programs

Professional Development

Available Funding

Report Absent Child

Temporary Closure Form

Health & Developmental Screenings

For children between the ages of birth to five years old.

LEARN MORE



Resources

Available Funding

[Access WebAuthor](#)



Curriculum



Workforce Initiatives



Training and Professional Learning



Equipment, Supplies, and Classroom Materials



Increase/Build the Supply of Child Care



CURRICULUM FUNDING



Curriculum Funding

Curriculum Reimbursement

- Curriculum purchased by the program between **April 1, 2023 - December 8, 2023** may be reimbursed.
- All receipts for the curriculum materials and professional development purchased must be uploaded when completing your application.
- Taxes are not included in the reimbursement.
- **You may also apply for a Curriculum Mini-Grant if you need additional curriculum materials to support your classrooms, or if the program did not receive professional development in its original purchase.**

Curriculum Mini-Grant

- This grant is for programs that need to purchase curriculum for classrooms.
- If the curriculum comes with a subscription, programs can request up to two years of subscriptions with their purchase.
- When completing your application, provider must upload a quote for the curriculum materials and professional development costs.
- ELC is not responsible for paying taxes associated with your quote. Taxes will be a cost that the program must cover.



Curriculum Funding Timeline

1

The grant applications will open to all providers today, **November 20, 2023**, and close on **November 27, 2023**.

2

ELC will review all submitted applications on **November 28, 2023**, thru **November 30, 2023**.

3

Notice of Award letters will be sent to programs once all applications have been reviewed.

4

Payments will be made to the program before **December 15, 2023**.

6

All curriculum or professional development purchases must be made by **December 15, 2023**. Any unused funds will require the program to reimburse ELC.

7

All Curriculum Mini-Grant receipts must be uploaded to your application by **December 22, 2023**.

Curriculum: To Note

ELC will prioritize applications for approval based on the following:

1. Programs that have a Program Assessment score below 5.00
 2. First-come, first-served basis
 3. Funding available until budget allocation has been exhausted
- Programs must choose a curriculum based on the DEL-approved curriculum list, which you can access here: bit.ly/DOEList
 - Programs that choose a curriculum different from their SR contract will need to contact the Provider Relations team to complete a contract amendment.
 - Each curriculum purchase must include training for at least one educator.
 - Curriculum and training purchased using **ARPA Workforce Continuous Quality Improvement (CQI) funds prior to March 29, 2023** do not qualify.



Curriculum: To Note (cont.)

Early care and education partners who apply for a Curriculum Reimbursement and/or Mini-Grant agree to be part of the Curriculum Expansion and Implementation Study.

Additional responsibilities include:

- Provide receipts for curriculum and training
- Complete the project surveys within 15 days of receipt
- Participate in project interviews
- Identify the Point of Contact for the researcher(s)

The surveys and interviews will involve questions related to curriculum implementation (training, processes, daily schedules, etc.) and may include provider and teacher demographic information. Providers will not be required to provide child-level information or personally identifiable information



WORKFORCE INITIATIVES



Workforce Initiatives



Funding is available to provide financial support for all child care providers to assist with recruiting and retaining early learning educators (ELEs). ELEs include Infant, Toddler, Pre-K, and VPK teachers, before and after-school teachers, assistants, and substitutes, and directors.

ELC Big Bend is currently performing an audit of applications submitted from Workforce Initiatives in FY 2022-23.

- If your teacher did not receive funds but it's showing as paid in the system, please send an email to finance@elcbigbend.org.
- If an application was denied during the 22-23 application period and something has changed where they now feel they may qualify, a new application should be submitted. **All newly uploaded documents must have a date of July 1, 2023 or later.**
- FY 2023-24 applications are for Early Learning Educators that did not receive funds in 2022-23.
- FY 2023-24 Applications: ELE Educators will complete their own application and upload required documents - directors will verify employment.

PROVIDER REQUIREMENTS



- 2023-24 Child Care Resource and Referral (CCR&R) profile
- Providers with an updated W9 and direct deposit forms
- Registered in WebAuthor
- Applicants must have been hired on/after **July 1, 2023**
- Applicants must be working at a program that is classified as child care by DCF.

RECRUITMENT BONUS



\$1,000

**New Early Learning
Educator/Director
Recruitment Bonus**

\$1,400

**Health and
Safety Bonus**

\$1,200

**CLASS Bonus:
Infant/Toddler**

\$1,200

**CLASS Bonus:
PreK**

\$1,500

**Upskill Director
Bonus**

NEW EARLY LEARNING EDUCATOR/DIRECTOR RECRUITMENT BONUS \$1,000

Eligibility Requirements:

- VPK/SR contract required
- Complete & Cleared Background Screening
- Completed 120 hours of Employment

HEALTH AND SAFETY BONUS \$1,400

Eligibility Requirements:

- VPK/SR contract required
- Completion Date after July 01, 2023 (including competency exams)
- Must submit DCF Transcript



CLASS BONUS OPPORTUNITY



CLASS Bonus \$600 Per Age Group (All courses must be taken before payments are released)

- CLASS PreK Training
 - A CLASS primer for Teachers – 3 Hours
 - Emotional Support for Teachers- 6 Hours
 - Classroom Organizations for Teachers- 6 Hours
 - Instructional Support for Teachers- 6 Hours

My TeachStone Learn About CLASS Video Series 2.5 Hours All Pre-K courses are online and self-paced; All 10 courses must be taken to be considered complete (15 minutes each)

- Learn about Positive Climate
- Learn about Negative Climate
- Learn about Teacher Sensitivity
- Learn about Regard for Student Perspectives
- Learn about Behavior Management
- Learn about Productivity
- Learn about Instructional Learning Formats
- Learn about Concept Development
- Learn about Quality of Feedback
- Learn about Language Modeling



CLASS BONUS OPPORTUNITY



CLASS Bonus \$600 Per Age Group (All courses must be taken before payments are released)

- **CLASS Infant/Toddler Training**

- A CLASS Primer for Teachers: 3 hours
- Thinking and Thriving: Interactions for Early Learning: 4 hours virtual
- Infant Intro to CLASS Tool Training: 3.75 hours virtual
- CLASS Support Kits for Infant/Toddler: Transfer to Practice Webinar: 2 hours
- Introduction to the CLASS Tool Training
- Responding with Developmentally Appropriate Practice: 30 minutes
- Your Favorite Teacher and CLASS: 15 minutes
- Observing Children's Cues: 15 minutes
- Nurturing Attachment with Teacher Sensitivity: 20 minutes
- Interactions at the Core: 60 minutes
- Interactions at the Heart of Healing (Trauma Informed PD): 6 hours

**APPLICANTS
CANNOT
APPLY IF
RECEIVED
FUNDS IN FY
22-23**

CLASS BONUS OPPORTUNITY

My TeachStone Learn About CLASS Video Series 3 Hours All 12 courses must be taken to be considered complete (15 minutes each)

Infant

- Infant Learn about Relational Climate
- Infant Learn about Teacher Sensitivity
- Infant Learn about Facilitated Exploration
- Infant Learn about Early Language Support

Toddler

- Toddler Learn about Positive Climate
- Toddler Learn about Negative Climate
- Toddler Learn about Teacher Sensitivity
- Toddler Learn about Regard for Child Perspective
- Toddler Learn about Behavior Guidance
- Toddler Learn about Facilitation of Language & Development
- Toddler Learn about Quality of Feedback
- Toddler Learn about Language Modeling



**APPLICANTS
CANNOT
APPLY IF
RECEIVED
FUNDS IN FY
22-23**

UPSKILL DIRECTOR BONUS \$750



Eligibility Requirements:

- Hired on/after **July 01, 2023** & still employed at application date
- VPK/SR contract is required
- Early Learning Directors employed by providers that participated in the Child Success Grants are ineligible for this bonus

Required Training (All courses must be taken to be considered complete):

- CLASS Primer for Leaders: 2 hours
- Building Community with Interactions: 6 hours
- Interactions at the Heart of Healing: Trauma- Informed Professional Development Series: 6 Hours Virtual

ADDITIONAL INCENTIVES FOR CONTRACTED PROVIDERS AND STAFF



- Background Checks: **\$100 per ELE**
 - Must have proof of cleared background
- First Aid & CPR Training: **\$100 per ELE**
 - Must have proof of training on/before **07/01/2023**
- ELC Big Bend Distance Learning Courses: **\$15 per hour, per course**
 - Provided by Kathy Douglas
 - Must have proof of course(s)



RETAIN BONUSES

Bonus based on longevity and skillset - only ELC contracted SR and/or VPK Child Care Providers and Staff can apply

| Length of Employment at Current Employer | Level 1 (DCF 45 Hours) | Level 2 (CDA) | Level 3 (Assoc. Degree) | Level 4 (Bach. Degree) |
|--|------------------------|---------------|-------------------------|------------------------|
| <90 Days | \$200 | \$400 | \$800 | \$1000 |
| 91 Days - 11 Months | \$400 | \$600 | \$1000 | \$1200 |
| 1 - 5 Years | \$800 | \$1000 | \$1500 | \$1600 |
| 5 - 10 Years | \$1000 | \$1200 | \$1600 | \$1800 |
| 10+ Years | \$1200 | \$1400 | \$1800 | \$2000 |

TRAINING & PROFESSIONAL LEARNING ACTIVITIES



Training & Professional Learning Activities

Early Learning Conferences



Funding designed to reimburse or approve a Request for Payment for Early Learning Educators to attend early learning conferences.

- Conference must have been on or after **July 1, 2023**, and must be before **May 31, 2024**.
- Certification of completion or conference attendance certificates plus agenda and receipts must be uploaded by **June 7, 2024**.
- Funding Goal: 50 Early Learning Educators
- Amount awarded: Not to exceed \$1,000 for conference registration, travel, hotel, and meals paid per educator

Please Note:

- *The approval and reimbursement of travel expenses are limited to those deemed reasonable and necessary by ELC Big Bend.*
- *Early Learning Educators (ELE) traveling for the ELC Big Bend Coalition will follow the policies and procedures for authorizing and obtaining reimbursement for official travel. Travel shall only be performed and reimbursed in accordance with section 112.061, Florida Statutes (F.S.); chapter 69I-42, Florida Administrative Code (FAC); and the DOE procedures. (Travel Presentation will be uploaded to the ELC website Providers > Resources > Available Funding)*

EQUIPMENT, SUPPLIES, AND CLASSROOM MATERIALS



Equipment, Supplies, & Classroom Materials

Mini Grants are available to contracted child care programs for the purchase of equipment, supplies, and classroom materials. Each provider would have the opportunity to select equipment and resources that fit the needs of their child care program.

Categories from which providers can choose from include:

- Purchase of business administration software to help providers run operations (e.g. ProCare, Brightwheel)
- Educational Field Trip Experience (e.g., Tallahassee Museum or Challenger Learning Center)
- Family Engagement Event
- Equipment to upgrade or replace outdoor play equipment
- Safety equipment and materials to prepare for natural disasters
- Purchase of developmentally appropriate software to support early learning and family engagement (e.g. MarcoPolo)

Equipment, Supplies, & Classroom Materials

Please Note:

- Eligible purchases must be made **on or after July 1, 2023 and before May 31, 2024**
- Award Amount: Based on facility capacity, up to \$10,000 max.
- Proof of Purchases must be uploaded by **June 7, 2024**
- Any unused funds will be required to be reimbursed to ELC Big Bend.



INCREASING / BUILDING THE SUPPLY OF CHILD CARE



Increasing/Building the Supply of Child Care

- Mini Grants available to **NEW** providers that start a child care program in the Big Bend Region
- Eligible Child Care Program was started on or after **July 1, 2023 and before May 31, 2024**
- Funding Goal: 20 New Child Care Programs

Award Amount: \$4,500.00 per program





Early Learning
Coalition of the
Big Bend Region

Our Contact

EMAIL

funding@elcbigbend.org

WEBSITE

www.elcbigbend.org